

## Chapter Three:

# Fundamental Pitch Description

### Placement of Notes on the Staff

The assignment of specific pitch to staff degrees has been discussed in chapter one. It is important that when any note is placed on a staff, it is drawn in such a way that there can be no question as to the exact pitch intended. Proper size and shape are also essential to their recognizability.



*correct*

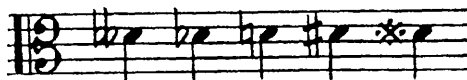


*incorrect*

EXAMPLE 3 - 1

### Accidentals

Traditional notational symbology permits each degree of the staff to have five different pitch possibilities: unaltered, lowered by one half step, lowered by two half steps (doubly lowered), raised by one half step, or raised by two half steps (doubly raised). It is with *naturals* (or the absence of any accidental), *flats*, *double-flats*, *sharps*, and *double-sharps*, respectively, that a note-head placed on any staff degree may specify one of these five possibilities.



EXAMPLE 3 - 2