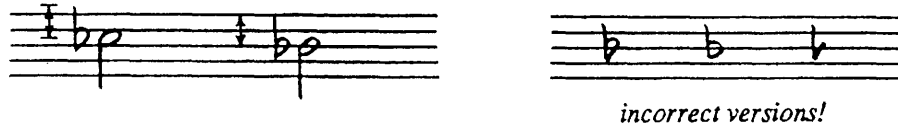


FUNDAMENTAL PITCH DESCRIPTION

Flats

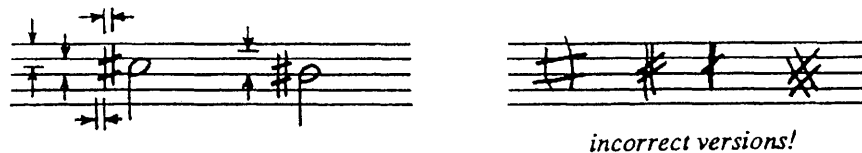
A *flat* indicates that the note it precedes is to be lowered by one half step from its unaltered state. The vertical stem of the flat extends a fifth above the staff degree it attends; the body of the flat is equal to one full space from top to bottom.



EXAMPLE 3 - 3

Sharps

A *sharp* indicates that the note it precedes is to be raised by one half step from its unaltered state. Sharps are constructed of two parallel, vertical lines spaced one half space apart and two, slightly oblique, parallel lines, spaced one full space apart that cross the two vertical "up-rights". The up-rights extend from a fourth above to a fourth below the staff degree the sharp attends. The "cross-bars" extend only one half space beyond each side of the vertical up-rights. A triangle may be helpful for drawing the up-rights but is not necessary for the cross-bars.



EXAMPLE 3 - 4

Naturals

A *natural* is used to cancel either an accidental occurring in the key signature or an accidental previously stated in the same measure. It is proportioned exactly the same as the sharp, extending from a fourth above to a fourth below the staff degree it attends, with verticals spaced one half