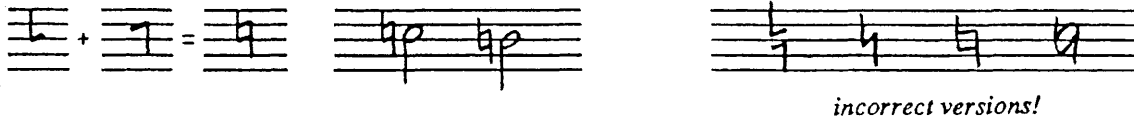


FUNDAMENTAL PITCH DESCRIPTION

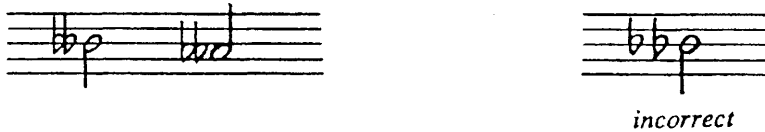
space apart. The natural sign may be viewed as two "L" shapes, one of which is inverted. These two "L" shapes comprise the two pencil strokes necessary in drawing the natural sign.



EXAMPLE 3 - 5

Double Flats

A *double flat* indicates that the note it precedes is to be lowered by two half steps from its unaltered state. Though it is made up of two flat signs located side by side, it should be considered as a single symbol, complete unto itself.



EXAMPLE 3 - 6

Double Sharps

A *double sharp* indicates that the note it precedes is to be raised by two half steps from its unaltered state. The manuscript version (i.e. hand written version) of the double sharp differs slightly from the engraved version (see Example 3-7). Draw the double sharp as an "X" the size of one full space, with four small dots placed, one each, inside the spaces created by the crossed lines.



EXAMPLE 3 - 7