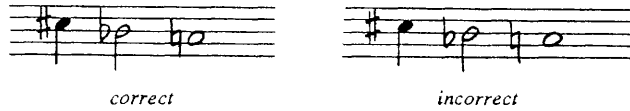


Application of Accidentals

The following rules govern the use of accidentals:

Accidentals must always be centered on the same staff degree as the note they attend. They are located to the left of the note-head and generally no further than one half space away (for alignment of accidentals attending voicings: see Chapter 10.).



EXAMPLE 3 - 11

When an accidental not included in the key signature precedes a note, it affects only that pitch in that octave, for the duration of the entire measure or until it is "canceled" by another accidental.



EXAMPLE 3 - 12

Thus, if notes of the same letter name but in different octaves are to be altered by an accidental, the accidental must be placed before the first note in each octave.



EXAMPLE 3 - 13

A
T
ti
th

W
sa
on

ch:

ol
=