

### FUNDAMENTAL PITCH DESCRIPTION

An accidental applies to the full duration of the note it attends. Therefore, an accidental should not precede a note that has been tied over from the measure before, though it must be restated at the first recurrence of that pitch in the new measure.



EXAMPLE 3 - 14

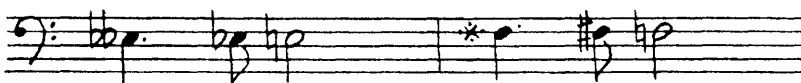
When a doubly sharped or doubly flatted note is to recur in the same measure but as a singly sharped, flatted, or natural note, only the new, single accidental is required.

The old practice of using compound accidentals to show cancellation or change is no longer observed.

*old notation:*



*preferred new notation:*



EXAMPLE 3 - 15