

FUNDAMENTAL PITCH DESCRIPTION

When two or more individual parts or voices share the same staff, an accidental originally placed before a note in one voice must be repeated if another voice subsequently moves to that same pitch.

This is particularly mandatory if two or more individual players are to read from the same staff.



EXAMPLE 3 - 16

The Logic of Accidentals

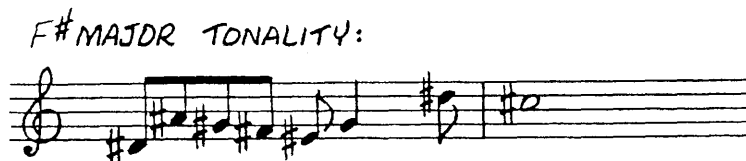
Sharps imply upward motion, flats imply downward motion. These directional tendencies must be taken into account when applying accidentals. Given no restrictions of tonality, it would be easy to say: all upward motion, by either step or leap, must employ only sharps; all downward motion, by either step or leap, must employ only flats.



EXAMPLE 3 - 17

However, the imposition of a tonal center often makes it impractical to adhere strictly to this principle.

Accidentals should maintain the integrity of the "key of the moment".



EXAMPLE 3 - 18