

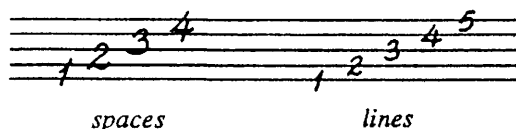
instrumental directions such as *on bell of cymbal* and *with feedback* also greatly affect the color of musical sound and must not be neglected.

Only after each of these parameters has been thoroughly considered and included in the description of a given sound has that sound been accurately notated.

The Staff

The most fundamental of all music symbols is the *staff*. This is because of the fact that all other notational materials are placed on, or in relation to, the staff. We can view the staff as a notational grid; the lines and spaces supply the locale for specific pitch description while durational values are represented by their placement from left to right. The remaining sound parameters, dynamic and timbral, are described by symbols and terms that are placed in relation to the pitch and rhythm symbols located on the staff.

The staff is composed of five, equally spaced horizontal lines. These lines, together with the spaces between them, are called *staff degrees* and are numbered from lowest to highest in the following manner.



EXAMPLE 1 - 1

Leger Lines

The five line, four space staff provides for the location of pitches occurring only within the range of an eleventh, that is, only from the space directly beneath the first line up through the space just above the fifth line. When a notated pitch outside this range is desired, an extension of the staff must be provided. Such extensions are referred to as *leger lines*.



EXAMPLE 1 - 2