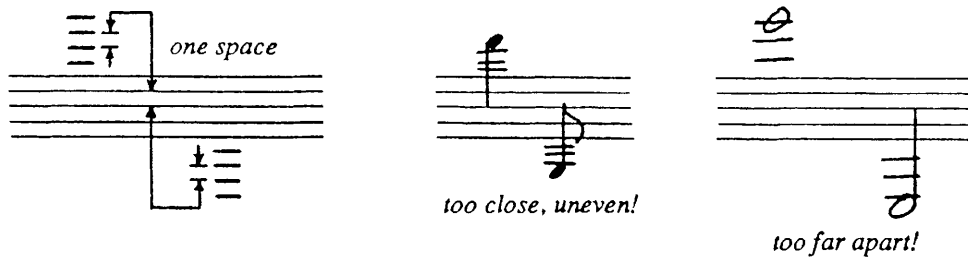


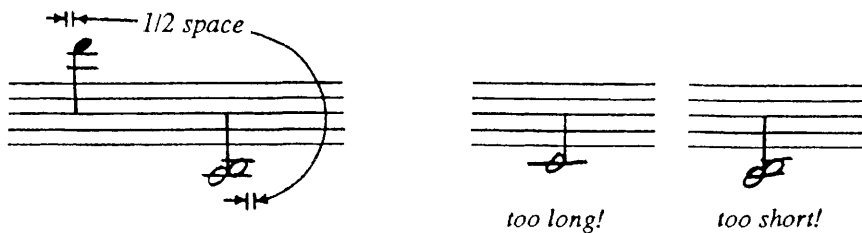
SOUND ENVELOPES AND THE NOTATIONAL GRID

Vertically, the space between leger lines is the same as that between the lines of the staff.



EXAMPLE 1-3

The length of a leger line should extend beyond either side of the notehead by only the distance of one half staff space.



EXAMPLE 1-4

When drawing leger lines, especially in successions of leger line stackings, care must be taken to insure that all leger lines are both horizontal and equally spaced. The melodic contour must never be obscured by improperly drawn leger lines. Use your triangle whenever necessary.



EXAMPLE 1-5