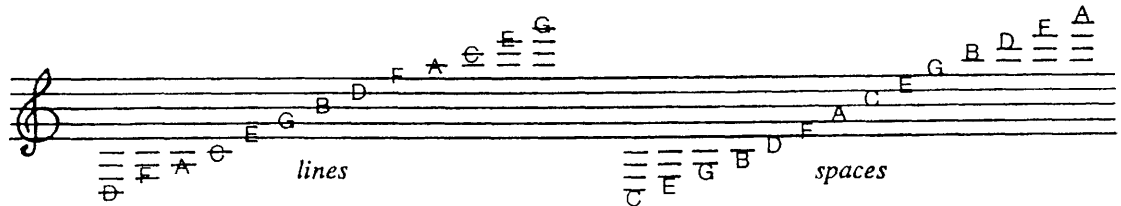


Clefs

Clefs supply fixed location for each specific pitch degree of the staff it attends. The two most commonly used clefs are the *treble clef* and the *bass clef*.

The Treble Clef

The first line of the *treble clef* (see Example 1-6) is assigned to the pitch E above middle C, the second line to G, the third to B, the fourth to D, and fifth to F. The first through fourth spaces are assigned to pitches F, A, C, and E respectively. It's because the treble clef embraces the G line that it is often referred to as the "G clef".



EXAMPLE 1-6

The treble clef is drawn in two separate strokes (see Figure 1-7). First, make a small dot just below the staff with a *counter-clockwise*, circular motion of your pencil. Then, exit this dot in a downward direction from the left side of the dot and make a small hook upwards to the right, this hook should extend no more than one space below the staff. Continue up vertically in a straight line to the middle of the fourth space, then, curve slightly to the right and stop at a point just one space above the staff. Pause for a moment with-out lifting your pencil off the paper.