

## SOUND ENVELOPES AND THE NOTATIONAL GRID

To draw the bass clef, start with a dot on the fourth line, this time made with a *clockwise* circular motion. Exit this dot in an upward direction from its left side and make an arc to, and just touching, the fifth line. Continue this arc to the third line, at which point, begin to exit the radius of the arc and proceed down into the middle of the first space. Avoid contacting the first line. Lastly, draw two small dots in the middle of the third and fourth spaces. These small dots must be vertically aligned and located the distance of one half space to the right of the body of the clef.



FIGURE 1 - 10

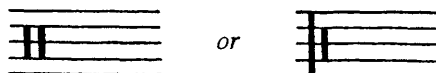
Don't let the "tail" at the bottom of the clef extend too far to the left imposing lean to the right.



EXAMPLE 1 - 11

### The Percussion Clef

The *percussion clef* commonly used for drum-set notation (see Example 1-12) consists of two parallel, vertical lines, one space apart and extending from the fourth line to the second line. An alternative version of this percussion clef consists of two parallel, vertical lines, the first of which extends from the fifth line to the first line and the second extends from the fourth line to the second line. As with all symbols consisting of vertical lines, these clefs may be drawn with the aid of your triangle.



EXAMPLE 1 - 12