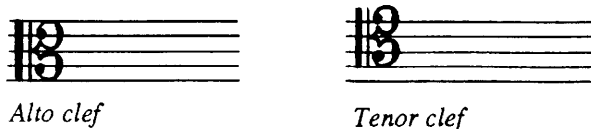


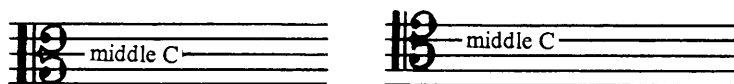
### The Alto and Tenor Clefs

Other clefs, primarily used in string and orchestral writing, are the *alto clef* and *tenor clef* (see Example 1-13). When drawing these clefs, an attempt should be made to recreate, as accurately as possible, their engraved, or printed, form.



EXAMPLE 1 - 13

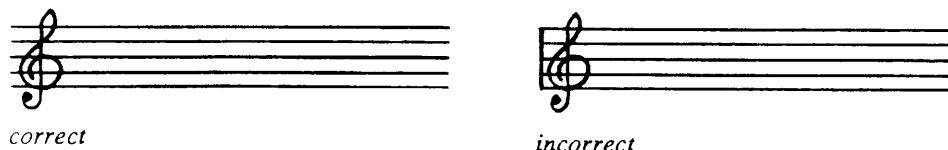
The alto and tenor clefs are the only members of the family of "moveable C" clefs that are still frequently used. These clefs are referred to as "moveable C" clefs because they may appear in different positions on the staff and middle C is always assigned to the line located by the center of the clef.



EXAMPLE 1 - 14

### Placement of Clefs

On parts and lead-sheets, clefs are placed at the beginning of the first line or staff, of each page. On orchestral parts, it's common for clefs to be placed at the beginning of every line. When occurring at the beginning of a line they are not preceded by a barline.



EXAMPLE 1 - 15