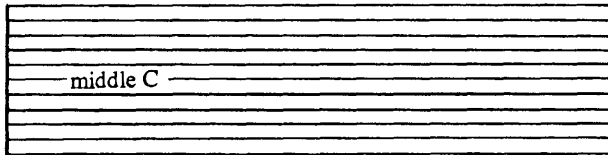


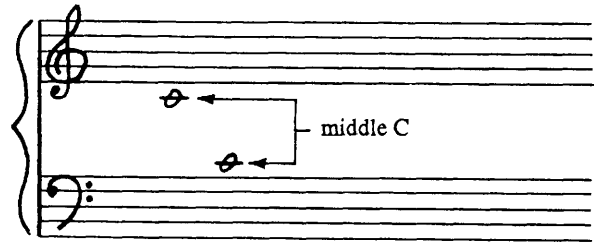
## The Great Staff

Our notatable equivalent to the "Great Staff" of early staff notation is the two-stave system common to keyboard notation. The Great Staff consisted of eleven lines, the middle of which was assigned to middle C. This middle line was eventually replaced by a leger line and the two five line staves that remained, containing treble clef above and bass clef below, were separated by additional space to produce the two-stave system we're familiar with today. This staff is still occasionally referred to as the "Great Staff" or "Grand Staff".

*the theoretical "great staff":*



*the modern "great staff" or "grand staff":*



EXAMPLE 1 - 16