

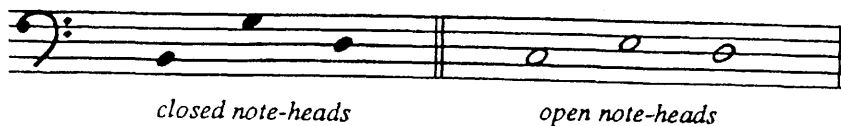
Chapter Two:

Fundamental Rhythmic Description

Note-heads

Note-heads, when placed on a staff that is attended by a clef, indicate specific pitch.

There are two types of note-heads, open and closed (see Example 2-1). Note that both are oval shaped, lean slightly to the right, and occupy one space from top to bottom.



EXAMPLE 2-1