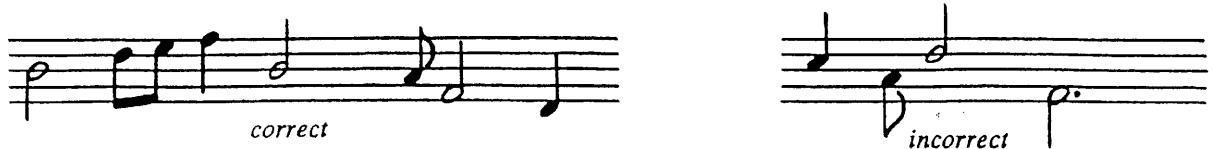


Stem Direction

Stems attached to individual notes located on the middle line and above go *down*. Stems attached to individual notes located on the middle line and below go *up*.



EXAMPLE 2 - 8

Though, as stated above, notes located on the middle line may have stems that go either up or down, they are more commonly drawn with stems down.

Stem Length in Leger Lines

Stems attached to notes located on the second leger line above the staff or higher must be drawn so that they extend down to, and contact, the middle line of the staff; likewise, stems attached to notes located on the second leger line below the staff or lower must also extend up to, and contact, the middle line.



EXAMPLE 2 - 9

The importance of these extended stem lengths will become evident later on when flags and beams are added to them.