

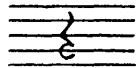
FUNDAMENTAL RHYTHMIC DESCRIPTION

Rests

For every notatable duration of sound, there is an equivalent notatable duration of silence. These notated, "rhythmic silences" are called *rests*.

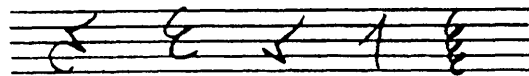
The Quarter Rest

The quarter rest represents the same rhythmic duration as a quarter note.



EXAMPLE 2 - 10

Because it is the most difficult of all the rests to draw, many "short-hand" versions have been devised (see Example 2-11). These non-conventional forms of the quarter rest are all too easily confused for other notational symbols and are therefore totally unacceptable! With practice, you'll find that the traditional quarter rest is no more difficult or time consuming to draw than these "abbreviated" forms.



not recommended

EXAMPLE 2 - 11

To draw a quarter rest, begin in the middle of the first space and make a small, circular hook to the left that embraces the second line (see Figure 2-12). Next, move your pencil, in a straight line, diagonally to the left, up to and touching the middle line. From this intersection with the middle line, curve slightly to the right, continuing up and around finishing in the middle of the fourth space at a location directly above the starting point. The rest