

FUNDAMENTAL RHYTHMIC DESCRIPTION

should be vertically centered and should not contact either the first, or the fifth, line.

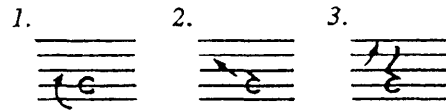
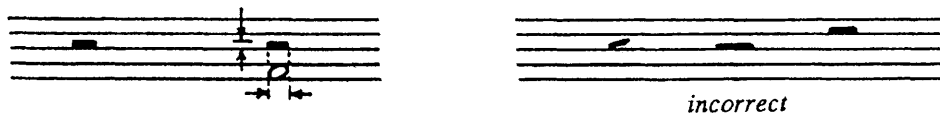


FIGURE 2 - 12

The Half Rest

The half rest, having the durational equivalency of a half note, is a solid, rectangular symbol that *sits on* the third or "middle" line (see Example 2-13). It is the length of a note-head and one half space thick. A triangle is particularly helpful in making a half rest that is straight and square, not resembling a haphazard "slash mark".

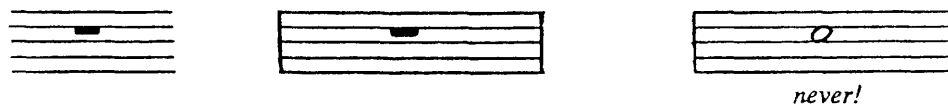


EXAMPLE 2 - 13

The Whole Rest

Like the half rest, the whole rest is a solid, rectangular symbol the length of a note-head and one half space thick. The whole rest *hangs* from the fourth line. When the whole rest represents an entire measure's rest (see Chapter 8.), it is centered within the measure.

*Though the whole rest is centered within the measure, the whole note is not.*



EXAMPLE 2 - 14