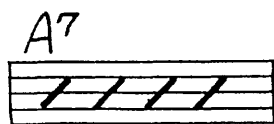


Percussion and Rhythm Note-heads

Specialized note-heads are frequently used in the notation of rhythmic patterns and percussive effects when pitch is not a consideration.

*Slashes*, thick diagonal lines extending from the second line up to the fourth line (see Example 2-15 a.), are used to notate rhythmic patterns attending chord symbols. When representing specific rhythmic patterns, these slashes must be attended by stems, with or without flags or beams (see Example 2-15 b.). Stems are attached to the ends of slashes and most commonly extend downward.



EXAMPLE 2 - 15 a.



EXAMPLE 2 - 15 b.

The open note-head version of the slash is an oblique parallelogram and is used when notating half note and whole note durations.



EXAMPLE 2 - 16