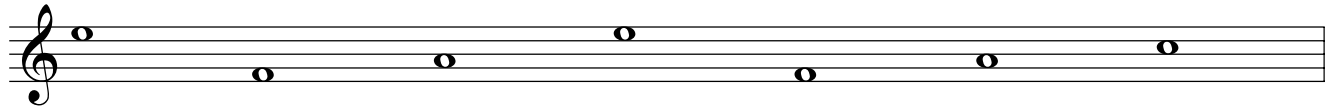


# Chapter 1 ~ Notation Answers

pg. 4 Spaces

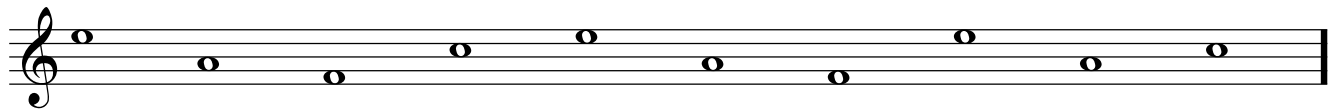
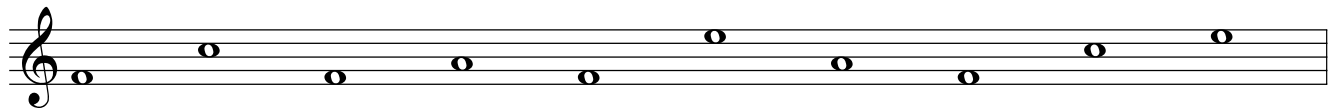


E F A E F A C

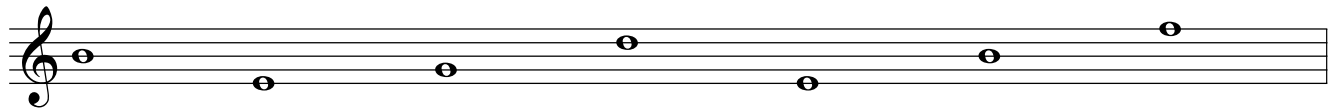


F E C A F E A

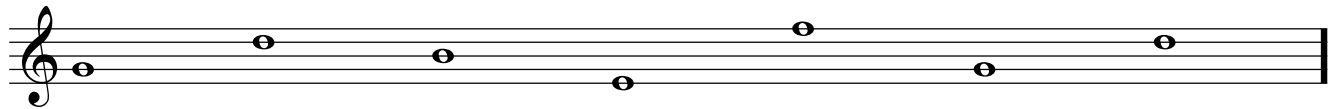
pg. 4 Spaces-2nd exercise



pg. 5 Lines



B E G D E B F



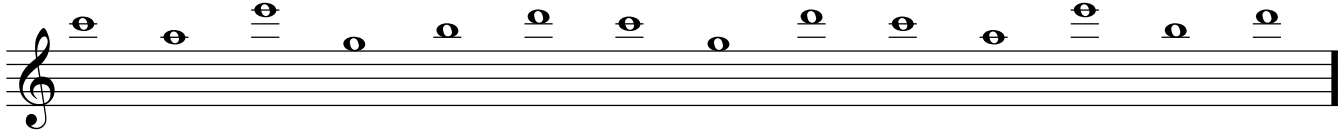
G D B E F G D

pg. 5 Lines-2nd exercise



Answers for page 7,8 & 9

pg. 7 Ledger lines & spaces

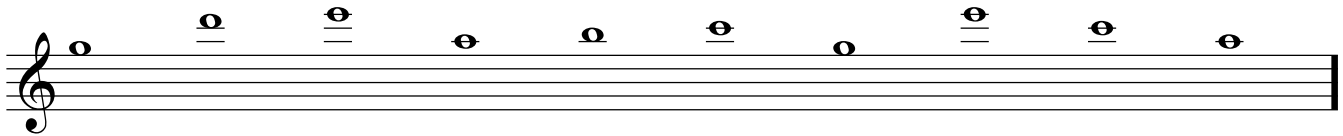


C A E G B D C G D C A E B D

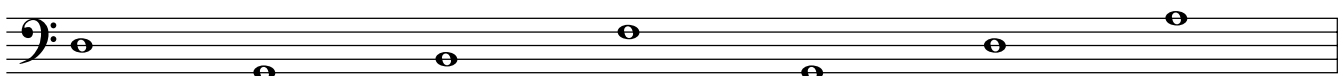


D G E A C A G F D A E F C B

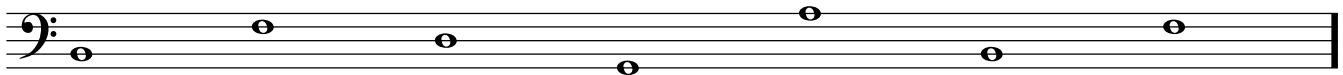
pg. 7 Ledger lines & spaces(bottom of page)



pg. 8 Bass cleff lines

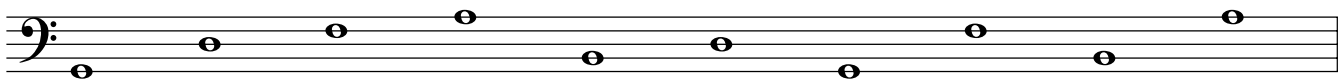


D G B F G D F

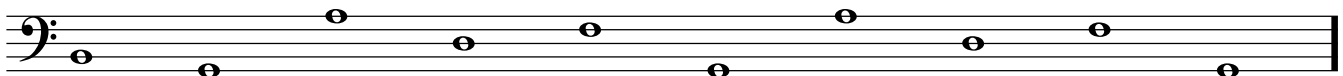


B F D G A B D

pg. 9 Bass cleff lines (top of page)



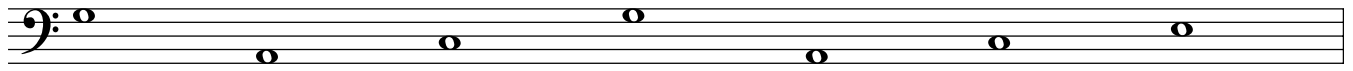
G D F A B D G F B A



B G A D F G A D F G

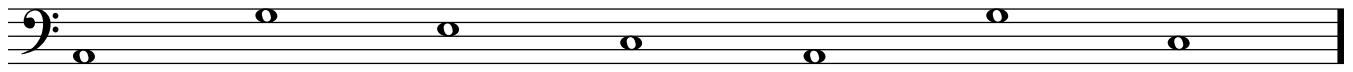
# Answers for page 9 & 10

pg. 9 Bass cleff spaces (bottom of page)



A musical staff with a bass clef. It contains seven whole notes: G (first space), A (second space), C (third space), G (first space), A (second space), C (third space), and E (fourth space).

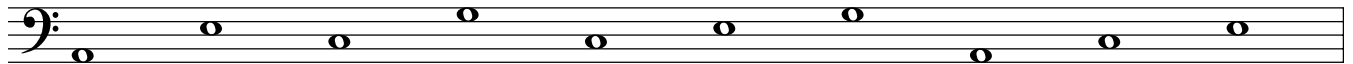
G      A      C      G      A      C      E



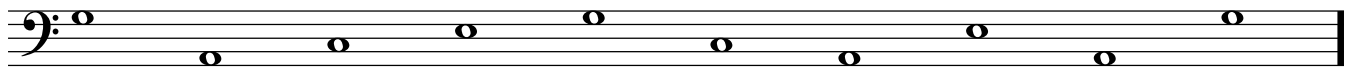
A musical staff with a bass clef. It contains seven whole notes: A (second space), G (first space), E (third space), C (first space), A (second space), G (third space), and C (fourth space).

A      G      E      C      A      G      C

pg. 10 Bass cleff spaces



A musical staff with a bass clef. It contains seven whole notes: G (first space), A (second space), C (third space), G (first space), A (second space), C (third space), and E (fourth space).



A musical staff with a bass clef. It contains seven whole notes: A (second space), G (first space), E (third space), C (first space), A (second space), G (third space), and C (fourth space).