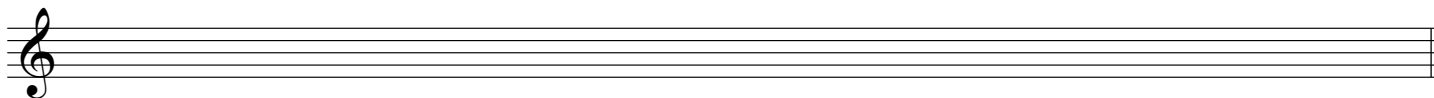
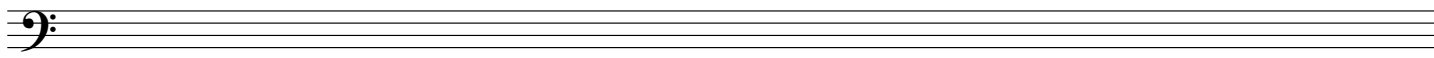


# Open/Closed Note Head

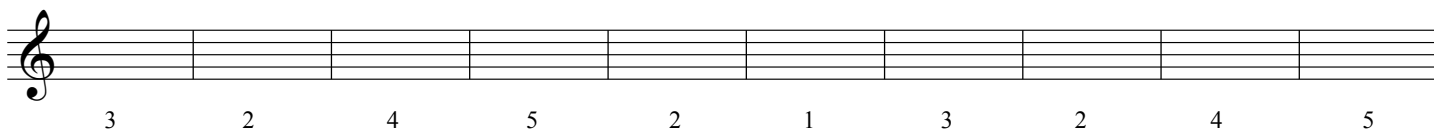
1. Practice writing treble clefs



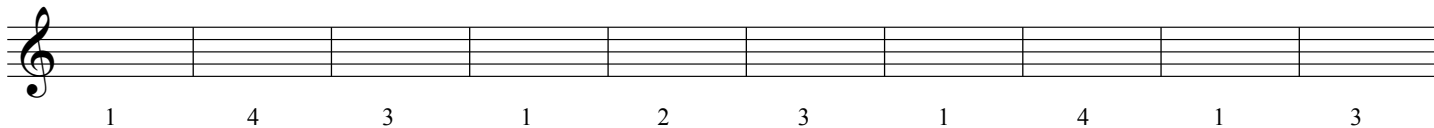
2. Practice writing bass clefs



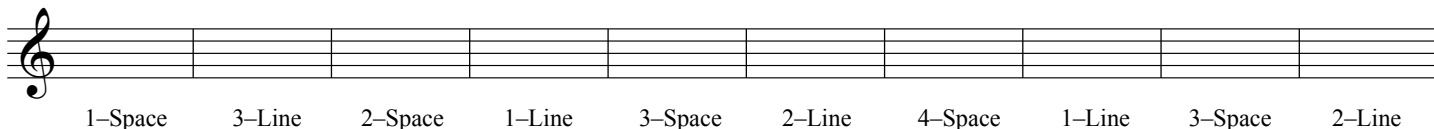
3. Write open note heads on the indicated lines of the staff



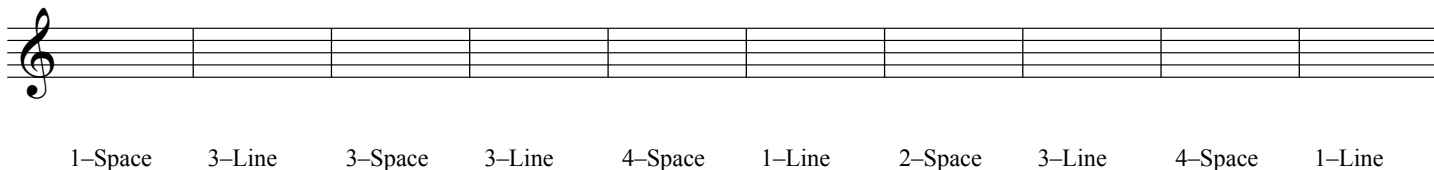
4. Write open note heads in the indicated spaces of the staff



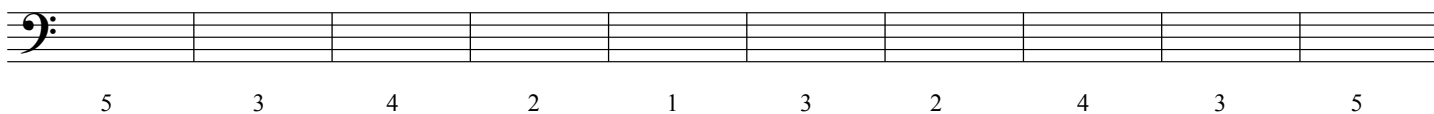
5. Write open note heads on the indicated ledger line or space above the staff



6. Write open note heads on the indicated ledger line or space below the staff



7. Write closed note heads on the indicated lines of the staff



8. Write closed note heads in the indicated spaces of the staff

