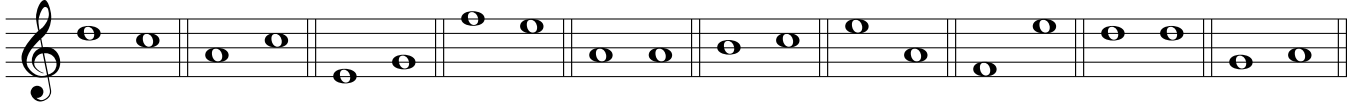
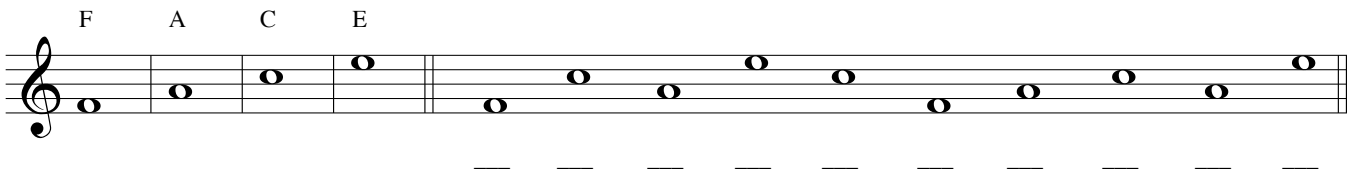


# NOTATION EXERCISES/READING THE STAFF

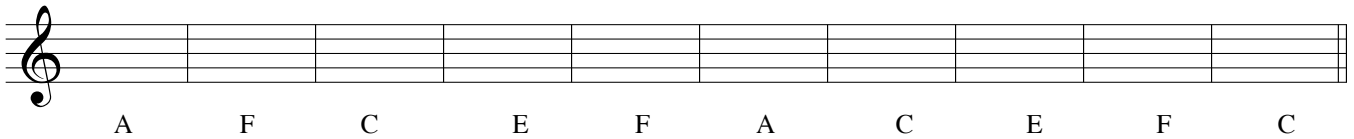
1. Identify whether the note on the right is higher, lower or the same pitch as the note on the left.  
Write the answer underneath the note groups. Each group of notes is separated by a double bar line.



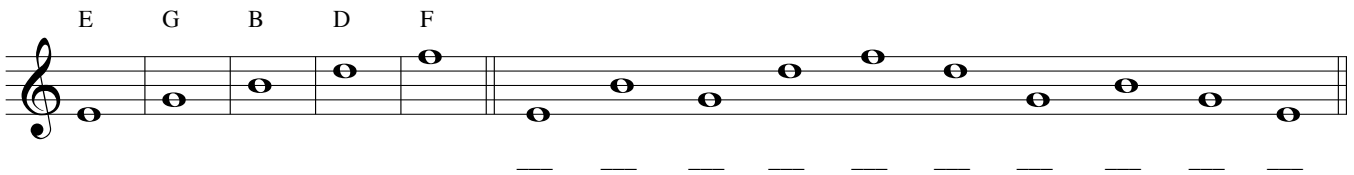
2a. Treble Clef ~ **Spaces only** ~ Write the name of the note on the line under the respective note.



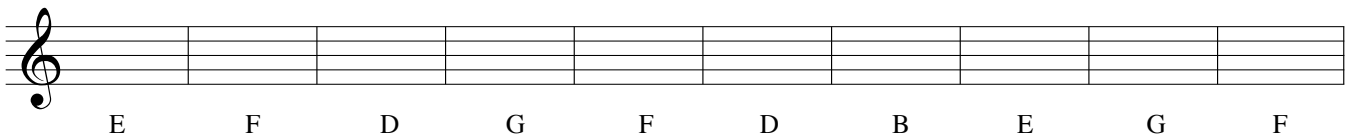
2b. Treble clef spaces only cont. ~ Write the note in the space that is indicated by the letter below each measure. Use open note heads only.



3a. Treble Clef ~ **Lines only** ~ Write the name of the note on the line under the respective note.



3b. Treble clef lines only cont. ~ Write the note on the line that is indicated by the letter below each measure. Use open note heads only.



4a. Treble clef ~ **LEDGER LINES** only **ABOVE** the staff ~ Write the name of the note on the line under the respective note.

A C E G \_ \_ \_ \_ \_ \_ \_ \_ \_ \_

4b. Treble clef ~ **LEDGER LINES** only **ABOVE** the staff ~ Write the note on the ledger line that is indicated by the letter below each measure. Use open note heads only.

C E A G C E A G C E

5a. Treble clef ~ **LEDGER LINE SPACES** only **ABOVE** the staff ~ Write the name of the note on the line under the respective note.

B D F A \_ \_ \_ \_ \_ \_ \_ \_ \_ \_

5b. Treble clef ~ **LEDGER LINE SPACES** only **ABOVE** the staff ~ Write the note in the ledger line space that is indicated by the letter below each measure. Use open note heads only.

D B F A D F B F D A

6a. Treble clef ~ **LEDGER LINE** only **BELOW** the staff ~ Write the name of the note on the line under the respective note.

C    A    F    D    —    —    —    —    —    —    —    —    —

6b. Treble clef ~ **LEDGER LINE** only **BELOW** the staff ~ Write the note on the line that is indicated by the letter below each measure. Use open note heads only.

C    D    A    F    C    D    A    C    F    A

7a. Treble clef ~ **LEDGER LINE SPACES** only **BELOW** the staff ~ Write the name of the note on the line under the respective note.

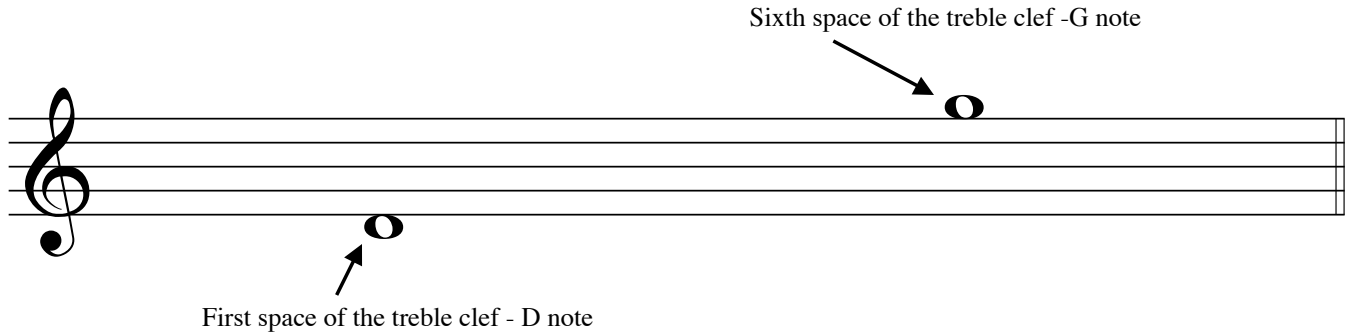
B    G    E    C    —    —    —    —    —    —    —    —    —

7b. Treble clef ~ **LEDGER LINE SPACES** only **BELOW** the staff ~ Write the note in the ledger line space that is indicated by the letter below each measure. Use open note heads only.

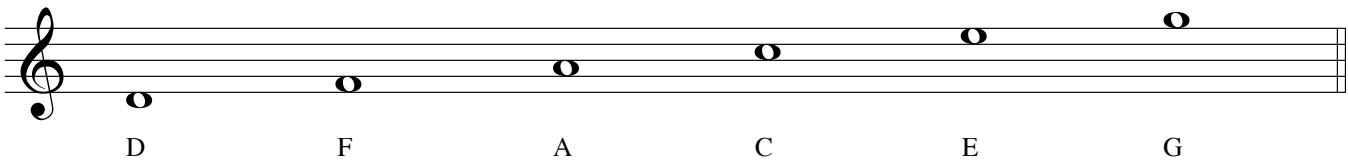
E    C    B    G    C    G    E    B    E    B

*Treble clef review ~ Tips to learning the notes of the staff:*

*Tip #1 – The staff consists of 5 lines and 6 spaces (not 4 as is commonly taught). When a line is drawn, a space is created above and below. Therefore, the first space below the treble clef staff is a D (below the first line E) and the top or last space of the treble clef is a G (above the 5th line F).*



*The notes of the spaces of the treble clef in total; that is, these are the notes that the fixed element of the staff, which are the five, always visible lines, generate. In turn, the lines are the notes that are skipped (E G B D & F).*

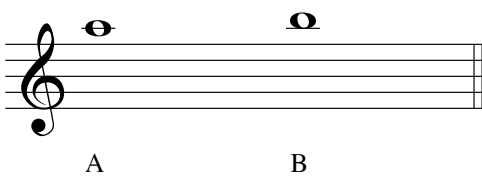


*Tip #2 - Ledger Lines of the Treble clef - above and below the staff.*

*Ledger lines are the lines that are always present but not visible unless a note is used that is higher or lower than the five lines and six spaces of the visible staff. The musical alphabet continues in ascending or descending order, starting with A as the first ledger line above the staff and C below the staff. These are the notes that would occur next in the staff at the top of the page.*

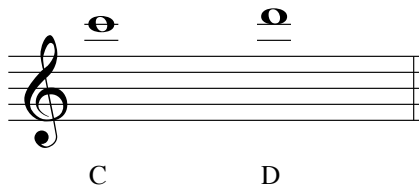
*Tip #3 - each ledger line designates two notes; one note on the line and one note above or below that line depending on whether or not the ledger line is above or below the staff.*

*1 Ledger line above*



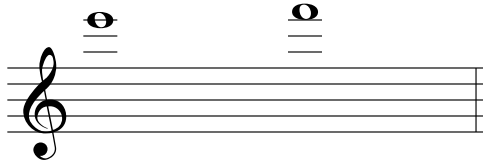
*Memorize as follows:  
1 ledger identifies A & B:*

*2 Ledger lines above*



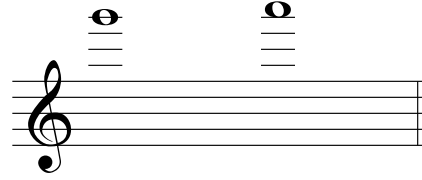
*2 ledger lines identifies C & D*

3 Ledger lines above



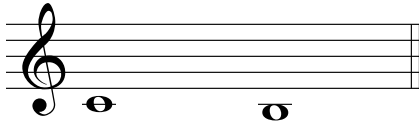
Memorize as follows:  
3 ledger identifies E & F:

4 Ledger lines above



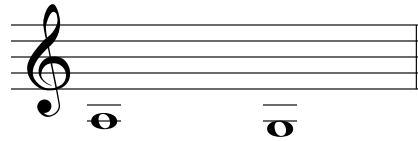
4 ledger lines identifies G & A

1 Ledger line below



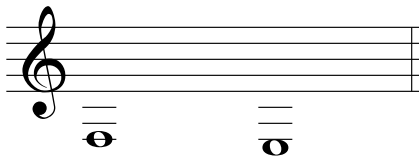
Memorize as follows:  
1 ledger identifies C & B:

2 Ledger lines below



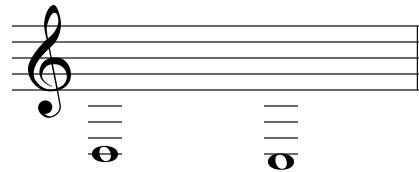
2 ledger lines identifies A & G

3 Ledger lines below



Memorize as follows:  
3 ledger identifies F & E:

4 Ledger lines below



4 ledger lines identifies D & C